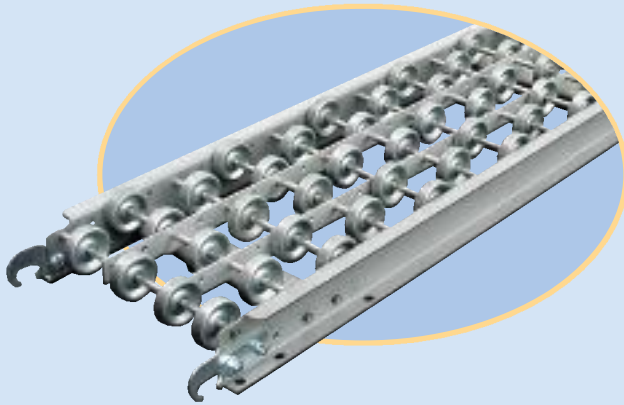


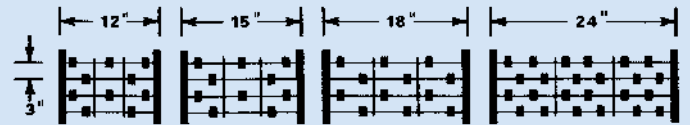
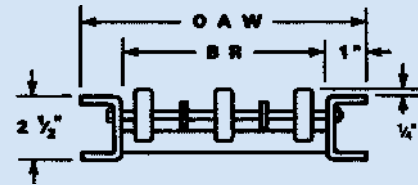
Skate Wheel Conveyors

Skate wheel conveyors are well suited to glide lightweight cartons and packages from one station to another. They're particularly ideal if you must set up a temporary conveyor line. Merely hook the sections together and away you go. Take note that aluminum is truly light in weight. For use in shipping, warehousing and other assembly areas. Also available with black plastic and white nylon wheels and stainless steel frames.



AW & SW SERIES SPECIFICATIONS:

Wheels: 2" x 5/8" Ball Bearing ♦ Axles: 1/4" on 3" Centers ♦ Frame: 2-1/2" x 1" x 1", 12 Ga. Galv. or 1/8" Alum. Formed Channel ♦ 5 Cross Braces and 2 Full Length 1" x 1/8" Alum. Center Supports ♦ Hook and Bolt Couplers Standard ♦ 10' Frame Capacity - Steel: 50lbs/ft, Alum: 30lbs/ft ♦ 5' Frame Capacity - Steel: 200lbs/ft, Alum: 100lbs/ft



► SW SERIES GALVANIZED STEEL

Over-All Width In	Model No	Wheels Per Ft	WEIGHT	
			5 Ft Section Lbs	10 Ft Section Lbs
12	12-SW-06	6	24	49
	12-SW-10	10	29	57
	12-SW-12	12	31	59
	12-SW-16	16	33	67
15	15-SW-08	8	30	55
	15-SW-10	10	36	58
	15-SW-14	14	46	65
	15-SW-16	16	48	69
18	18-SW-12	12	32	66
	18-SW-14	14	35	70
	18-SW-16	16	37	73
	18-SW-18	18	38	77
20	20-SW-16	16	39	76
	20-SW-18	18	40	84
	20-SW-20	20	48	88
	20-SW-24	24	52	95
24	24-SW-18	18	42	83
	24-SW-20	20	44	86
	24-SW-24	24	47	92
	24-SW-28	28	50	99
30	30-SW-24	24	62	116
	30-SW-28	28	64	120
	30-SW-30	30	66	122

► AW SERIES ALUMINUM

Over-All Width In	Model No	Wheels Per Ft	WEIGHT	
			5 Ft Section Lbs	10 Ft Section Lbs
12	12-AW-06	6	17	32
	12-AW-10	10	19	36
	12-AW-12	12	20	38
	12-AW-16	16	23	42
15	15-AW-08	8	19	36
	15-AW-10	10	20	39
	15-AW-14	14	22	43
	15-AW-16	16	26	46
18	18-AW-12	12	23	45
	18-AW-14	14	24	47
	18-AW-16	16	25	48
	18-AW-18	18	26	51
20	20-AW-16	16	29	52
	20-AW-18	18	30	55
	20-AW-20	20	31	57
	20-AW-24	24	34	62
24	24-AW-18	18	29	57
	24-AW-20	20	30	59
	24-AW-24	24	33	64
	24-AW-28	28	34	68
30	30-AW-24	24	42	80
	30-AW-28	28	44	83
	30-AW-30	30	45	85