

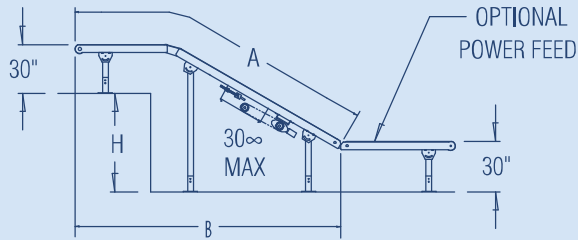
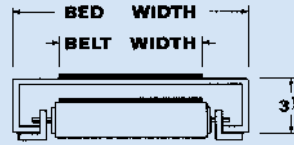
Floor-To-Floor Incline Conveyors

This slider bed conveyor, designed for inclined operation, moves product from level to level or serves as a booster in a gravity system.

FFI SERIES SPECIFICATIONS:

3/4 HP 115/1/60 Motor ♦ 12 Ga. Formed Bed ♦ Rough-Top Belt ♦ 60 FPM Standard ♦ 4" Drive Pulley ♦ Capacity: 400 lbs ♦ Power Feeder Optional

For electrical controls see page 21.



► FFI SERIES

Model No	Belt Width In	Bed Width In	Weight Lbs							
			665	700	810	846	884	920	972	1044
FFI-12	12	16	665	700	810	846	884	920	972	1044
FFI-18	18	22	850	892	1012	1055	1095	1136	1180	1270
FFI-24	24	28	980	1025	1064	1214	1256	1296	1340	1430
FFI-30	30	34	1120	1174	1354	1406	1456	1496	1548	1670
Over-All Length (A) Ft:			21	23	25	27	29	31	33	35
Height (H) Floor to Floor at 30° Ft:			8	9	10	11	12	13	14	15
Length of (B) at 30° Ft:			18	20	21	23	25	27	28	30

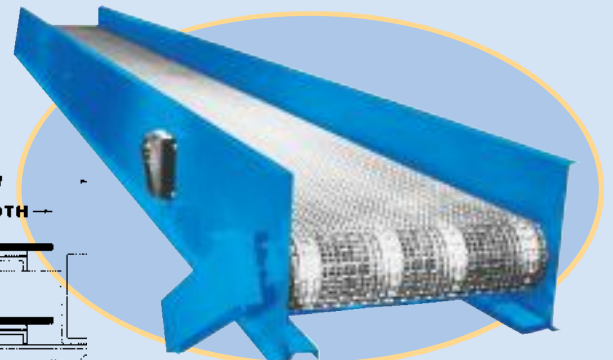
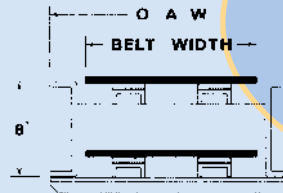
Wire Mesh Belt Conveyors

The wire mesh belt is virtually impervious to extreme heat and cold, and thus can transport components through ovens or freezers. For use in dry operations, scrap handling, and steam cleaning.

WMB SERIES SPECIFICATIONS:

1/2 HP 115/1/60 Motor ♦ 10 Ga. Construction ♦ 1" x 1" x 1/2" Wire Mesh Galv. Belt ♦ 6" Cast Iron Sprocket ♦ 60 FPM ♦ UHMW Wear Strips ♦ Capacity: 450 lbs.

For electrical controls see page 21.



► WMB SERIES

Model No	Belt Width In	Bed Width In	WEIGHT					
			Over-All Length: 5 Ft	Over-All Length: 10 Ft	Over-All Length: 15 Ft	Over-All Length: 20 Ft	Over-All Length: 25 Ft	Over-All Length: 30 Ft
WMB-12	12	15	285	354	447	516	609	678
WMB-18	18	21	303	396	506	589	696	782
WMB-24	24	27	345	445	573	673	801	901