

Extra Heavy Duty Roller Conveyors

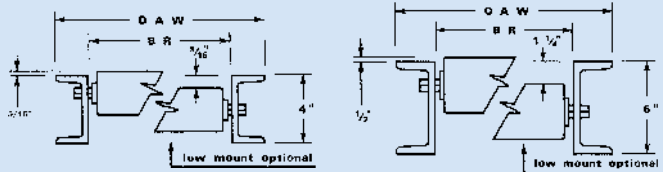
2-5/8" diameter extra heavy 7 gauge roller utilizes all of the features of the 250-SRH Series conveyor.

3-1/2" diameter combined with 6" super heavy duty frame is indestructible.



258-SRH SERIES SPECIFICATIONS:

Rollers: 2-5/8", 7 Ga. ♦ Axles: 11/16" Hex, Spring Loaded ♦ Frame: 4" x 5.4 lbs/ft Structural Channel ♦ 5 Welded Cross Braces ♦ Butt Couplers Standard ♦ Roller Cap. - 800 lbs. ♦ Rollers can be set low in frame ♦ 10' Frame Capacity: 350lbs/ft ♦ 5' Frame Capacity: 1100lbs/ft ♦ Powder Coated Blue



2-5/8" Extra Heavy Duty Roller Conveyor

3-1/2" Extra Heavy Duty Roller Conveyor

▶ 258-SRH SERIES

| Roller Centers In | Model No | Over-All Width In | Between Rail Width In | WEIGHT | |
|-------------------|--------------|-------------------|-----------------------|------------------|-------------------|
| | | | | 5 Ft Section Lbs | 10 Ft Section Lbs |
| 3 | 258-SRH-0312 | 12 | 9 | 187 | 340 |
| | 258-SRH-0315 | 15 | 12 | 223 | 404 |
| | 258-SRH-0318 | 18 | 15 | 257 | 468 |
| | 258-SRH-0324 | 24 | 21 | 328 | 596 |
| | 258-SRH-0330 | 30 | 27 | 398 | 724 |
| | 258-SRH-0336 | 36 | 33 | 469 | 852 |
| | 258-SRH-0342 | 42 | 39 | 539 | 980 |
| 4 | 258-SRH-0412 | 12 | 9 | 156 | 284 |
| | 258-SRH-0415 | 15 | 12 | 184 | 335 |
| | 258-SRH-0418 | 18 | 15 | 210 | 382 |
| | 258-SRH-0424 | 24 | 21 | 264 | 480 |
| | 258-SRH-0430 | 30 | 27 | 317 | 577 |
| | 258-SRH-0436 | 36 | 33 | 371 | 675 |
| | 258-SRH-0442 | 42 | 39 | 425 | 772 |
| 6 | 258-SRH-0612 | 12 | 9 | 127 | 230 |
| | 258-SRH-0615 | 15 | 12 | 145 | 263 |
| | 258-SRH-0618 | 18 | 15 | 163 | 297 |
| | 258-SRH-0624 | 24 | 21 | 200 | 364 |
| | 258-SRH-0630 | 30 | 27 | 237 | 431 |
| | 258-SRH-0636 | 36 | 33 | 274 | 498 |
| | 258-SRH-0642 | 42 | 39 | 310 | 564 |
| 12 | 258-SRH-1212 | 12 | 9 | 71 | 174 |
| | 258-SRH-1215 | 15 | 12 | 82 | 192 |
| | 258-SRH-1218 | 18 | 15 | 93 | 211 |
| | 258-SRH-1224 | 24 | 21 | 116 | 247 |
| | 258-SRH-1230 | 30 | 27 | 139 | 284 |
| | 258-SRH-1236 | 36 | 33 | 156 | 320 |
| | 258-SRH-1242 | 42 | 39 | 184 | 357 |

350-SRH SERIES SPECIFICATIONS:

Rollers: 3-1/2" x .216 Wall Thickness ♦ Axles: 1-1/16" Hex, Drilled for Cotter Pins ♦ Frame: 6" x 8.2 lbs/ft Structural Channel ♦ Powder Coated Blue ♦ 5 Welded Cross Braces ♦ Roller Cap. - 1100 lbs. ♦ Rollers can be set low as an option ♦ 10' Frame Capacity: 860lbs/ft ♦ 5' Frame Capacity: 1800 lbs/ft

▶ 350-SRH SERIES

| Roller Centers In | Model No | Over-All Width In | Between Rail Width In | WEIGHT | |
|-------------------|--------------|-------------------|-----------------------|------------------|-------------------|
| | | | | 5 Ft Section Lbs | 10 Ft Section Lbs |
| 4 | 350-SRH-0412 | 12 | 8 | 263 | 515 |
| | 350-SRH-0418 | 18 | 14 | 346 | 680 |
| | 350-SRH-0424 | 24 | 20 | 434 | 855 |
| | 350-SRH-0430 | 30 | 26 | 522 | 1025 |
| | 350-SRH-0436 | 36 | 32 | 609 | 1194 |
| | 350-SRH-0442 | 42 | 38 | 710 | 1362 |
| 8 | 350-SRH-0812 | 12 | 8 | 178 | 346 |
| | 350-SRH-0818 | 18 | 14 | 226 | 435 |
| | 350-SRH-0824 | 24 | 20 | 273 | 522 |
| | 350-SRH-0830 | 30 | 26 | 320 | 610 |
| | 350-SRH-0836 | 36 | 32 | 371 | 701 |
| | 350-SRH-0842 | 42 | 38 | 443 | 804 |
| 12 | 350-SRH-1212 | 12 | 8 | 152 | 290 |
| | 350-SRH-1218 | 18 | 14 | 185 | 350 |
| | 350-SRH-1224 | 24 | 20 | 220 | 415 |
| | 350-SRH-1230 | 30 | 26 | 248 | 473 |
| | 350-SRH-1236 | 36 | 32 | 275 | 532 |
| | 350-SRH-1242 | 42 | 38 | 318 | 596 |