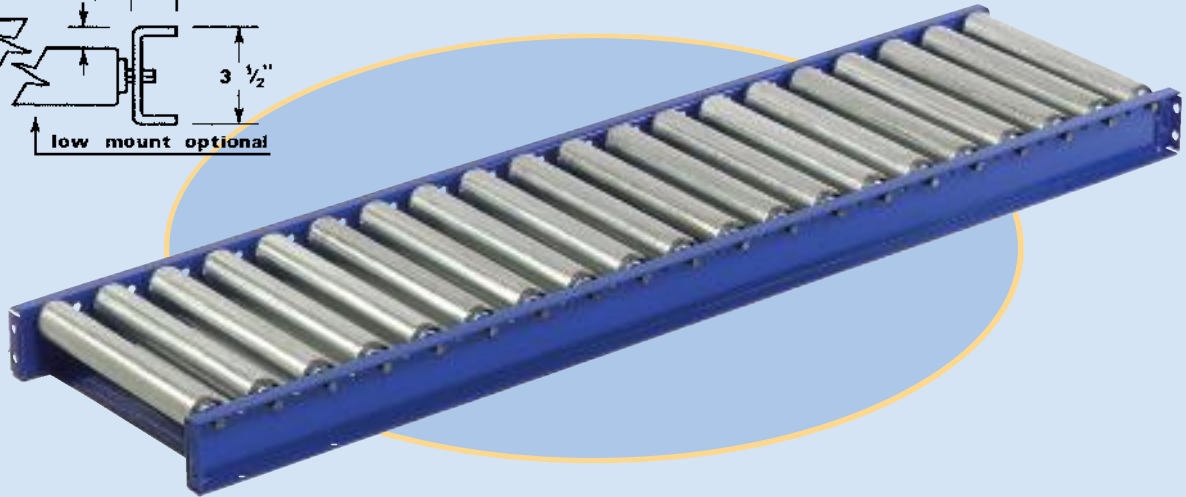
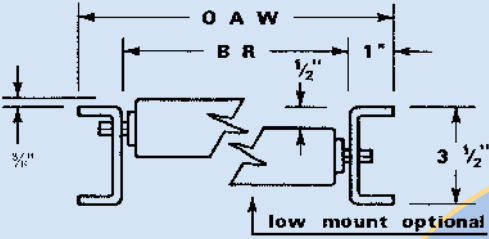


## 1.9" Medium / Heavy Duty Roller Conveyors

For permanent industrial usage. All-welded construction creates a durable conveyor. Check these superior features in a 1.9" medium duty roller conveyor. 2-1/4" roller centers available. Poly covered rollers available.



### 190-SRM SERIES SPECIFICATIONS:

Rollers: 1.9" 16 gauge galvanized steel ♦ Axles: 7/16" Hex, Spring Loaded  
 ♦ Frame: 3-1/2" x 1" x 1", 10 Ga. Powder Coated Blue Steel Formed Channel ♦ Welded Cross Braces ♦ Butt Couplers Standard ♦ 10' Frame Capacity: 140lbs/ft. ♦ 5' Frame Capacity: 500lbs/ft. ♦ Roller Cap. - 250 lbs.

### ▶ 190-SRM SERIES

Roller Centers In	Model No	Over-All Width In	Between Rail Width In	WEIGHT	
				5 Ft Section Lbs	10 Ft Section Lbs
3	190-SRM-0312	12	10	65	130
	190-SRM-0315	15	13	78	156
	190-SRM-0318	18	16	87	174
	190-SRM-0320	20	18	106	192
	190-SRM-0324	24	22	103	205
	190-SRM-0326	26	24	129	234
	190-SRM-0330	30	28	131	262
	190-SRM-0332	32	30	139	277
	190-SRM-0336	36	34	153	305
	190-SRM-0342	42	40	174	347
	190-SRM-0348	48	46	195	389
4 1/2	190-SRM-4512	12	10	52	104
	190-SRM-4515	15	13	59	118
	190-SRM-4518	18	16	69	137
	190-SRM-4520	20	18	82	148
	190-SRM-4524	24	22	87	173
	190-SRM-4526	26	24	99	180
	190-SRM-4530	30	28	110	200
	190-SRM-4532	32	30	115	210
	190-SRM-4536	36	34	126	230
	190-SRM-4542	42	40	138	260
	190-SRM-4548	48	46	150	290

### ▶ 190-SRM SERIES (CONTINUED)

Roller Centers In	Model No	Over-All Width In	Between Rail Width In	WEIGHT	
				5 Ft Section Lbs	10 Ft Section Lbs
6	190-SRM-0612	12	10	41	81
	190-SRM-0615	15	13	54	107
	190-SRM-0618	18	16	65	119
	190-SRM-0620	20	18	70	127
	190-SRM-0624	24	22	78	142
	190-SRM-0626	26	24	82	150
	190-SRM-0630	30	28	91	166
	190-SRM-0632	32	30	96	174
	190-SRM-0636	36	34	104	189
	190-SRM-0642	42	40	116	213
	190-SRM-0648	48	46	128	237
12	190-SRM-1212	12	10	42	76
	190-SRM-1215	15	13	46	83
	190-SRM-1218	18	16	49	90
	190-SRM-1220	20	18	52	94
	190-SRM-1224	24	22	57	104
	190-SRM-1226	26	24	59	108
	190-SRM-1230	30	28	65	118
	190-SRM-1232	32	30	67	122
	190-SRM-1236	36	34	73	132
	190-SRM-1242	42	40	82	147
	190-SRM-1248	48	46	91	162