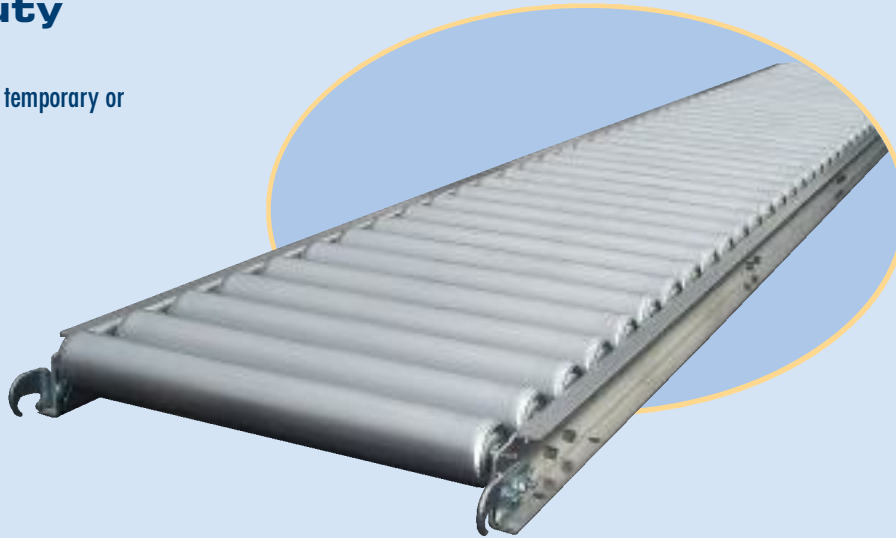
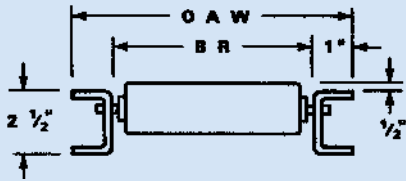


1.9" & 2" Light Duty Roller Conveyors

Economical, light weight. Ideal for handling cartons in temporary or permanent applications. Poly covers available.



▶ 190-SRL SERIES

Roller Centers In	Model No	WEIGHT			
		Over-All Width In	Between Rail Width In	5 Ft Section Lbs	10 Ft Section Lbs
3	190-SRL-0312	12	10	48	95
	190-SRL-0315	15	13	55	112
	190-SRL-0318	18	16	64	127
	190-SRL-0320	20	18	81	136
	190-SRL-0324	24	22	84	156
	190-SRL-0326	26	24	85	171
	190-SRL-0330	30	28	96	193
4 1/2	190-SRL-4512	12	10	39	79
	190-SRL-4515	15	13	43	86
	190-SRL-4518	18	16	49	98
	190-SRL-4520	20	18	53	105
	190-SRL-4524	24	22	62	124
	190-SRL-4526	26	24	66	129
	190-SRL-4530	30	28	70	140
6	190-SRL-0612	12	10	33	66
	190-SRL-0615	15	13	37	75
	190-SRL-0618	18	16	39	82
	190-SRL-0620	20	18	45	89
	190-SRL-0624	24	22	52	102
	190-SRL-0626	26	24	53	106
	190-SRL-0630	30	28	59	117
12	190-SRL-1212	12	10	29	52
	190-SRL-1215	15	13	32	58
	190-SRL-1218	18	16	35	63
	190-SRL-1220	20	18	36	66
	190-SRL-1224	24	22	40	73
	190-SRL-1226	26	24	42	76
	190-SRL-1230	30	28	46	83

▶ 200-ARL SERIES

Roller Centers In	Model No	WEIGHT			
		Over-All Width In	Between Rail Width In	5 Ft Section Lbs	10 Ft Section Lbs
3	200-ARL-0312	12	10	27	53
	200-ARL-0315	15	13	32	63
	200-ARL-0318	18	16	34	72
	200-ARL-0320	20	18	38	75
	200-ARL-0324	24	22	42	83
4 1/2	200-ARL-4512	12	10	23	42
	200-ARL-4515	15	13	24	46
	200-ARL-4518	18	16	26	53
	200-ARL-4524	24	22	31	62
6	200-ARL-0612	12	10	18	36
	200-ARL-0615	15	13	20	40
	200-ARL-0618	18	16	23	45
	200-ARL-0620	20	18	25	48
	200-ARL-0624	24	22	29	56
12	200-ARL-1212	12	10	15	27
	200-ARL-1215	15	13	16	29
	200-ARL-1218	18	16	18	32
	200-ARL-1220	20	18	19	34
	200-ARL-1224	24	22	21	38

200-ARL & 190-SRL SERIES SPECIFICATIONS:

Rollers: 1.9", 16 Ga. Galv./2" Alum. ♦ Axles: 1/4" Round, Spring Loaded
 ♦ Frame: 2-1/2" x 1" x 1", 12 Ga. Galv. or 1/8" Alum. Formed Channel
 ♦ 5 Cross Braces ♦ Hook and Bolt Couplers Standard ♦ Roller Capacity - Steel:
 125lbs, Alum: 65lbs ♦ 10' Frame Capacity - Steel: 50lbs/ft, Alum: 30lbs/ft,
 ♦ 5' Frame Capacity - Steel: 200lbs/ft, Alum.: 100lbs/ft